

PENDALEX® P⁺


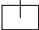
The multifunctional all-rounder



Glatz 

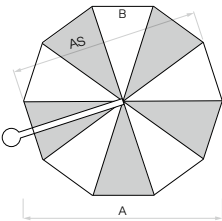
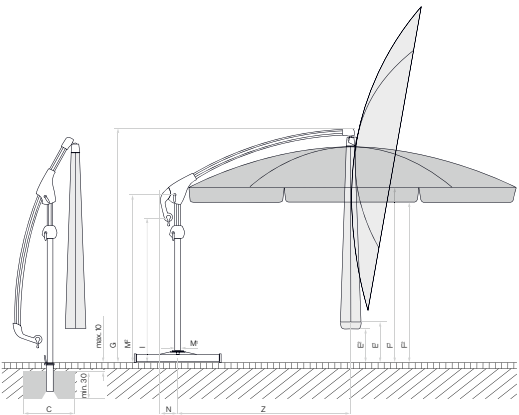


Assortment

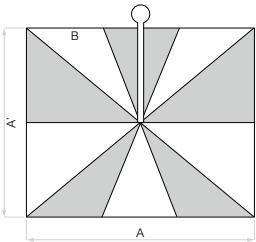
	Nominal size	Number of ribs	Order no. without flounce	Order no. with flounce	Order no. without flounce	Order no. with flounce
	cm					
	Ø 300	10 parts	014 00 300 171	014 00 300 170	014 00 300 301	014 00 300 300
	Ø 325	10 parts	014 00 325 171	014 00 325 170	014 00 325 301	014 00 325 300
	Ø 350	10 parts	014 00 350 171	014 00 350 170	014 00 350 301	014 00 350 300
	285×230	10 parts	014 00 285 171	014 00 285 170	014 00 285 301	014 00 285 300

Nominal size	Lateral distance	Mast Ø	Area covered	Crank height	Height closed/ with flounce	Clear headroom/ with flounce	Total height	Height of mast	Overhang at the back	Length of free-arm	Foundation	Minimum weight for base	max. wind speed open perm.
cm	cm	cm	m²	cm	cm	cm	cm	cm	cm	cm	cm	kg	km/h (wind force)
A	AS	M¹	B	I	E¹/E²	F¹/F²	G	M²	N	Z	C		
Ø 300	286	6.7	7.1	146...196	61...111/ 43...93	175...225/ 157...207	235...285	167...217	17...103	89...175	60×60	90	20(4)
Ø 325	310	6.7	8.3	146...196	48...98/ 30...80	175...225/ 157...207	235...285	167...217	17...103	89...175	60×60	120	20(4)
Ø 350	335	6.7	9.6	146...196	36...86/ 18...68	175...225/ 157...207	235...285	167...217	17...103	89...175	60×60	120	20(4)
285×230	-	6.7	6.6	146...196	36...86/ 18...68	175...225/ 157...207	235...285	167...217	17...103	89...175	60×60	90	20(4)

The listed measures represent extrapolated average values that may be slightly different on the product (± 2 % ± 5 cm).
The height dimensions are based on the ground socket PX, without flounce. With the base variants these vary slightly. With the variants with the ground socket M4 and mounting plate M4 / M8 the stated height dimensions are reduced by 9.5–10.5 cm. The max. wind speed limits as per our separate sheet apply only if the parasol canopy is in a horizontal position and if there is a fix ground anchorage. A base with the specified minimum weight is not sufficient.
In the presence of several parasols, the minimum distance between one parasol and another and between parasols and walls shall be 20 cm.



10 parts



10 parts

Loose cover max. 10 cm, concrete thickness
min. 30 cm (pay attention to frost depth),
Guarantee water drainage

Accessories		Absolutely necessary	Order no.
Protective cover made of coated, tear-resistant polyester fabric			
1	Protective cover with zip and rod		350 01 609 931
Electrical accessories			
2	OSYRION Spot LED battery-powered light, set of 2, with remote control, including charger		350 01 563 000
3	OSYRION Spot LED battery-powered light, set of 4, with remote control, including charger		350 01 563 100
Fixations			
Ground sockets			
4	Ground socket PX, hot-dip galvanised steel	Connection tube PX	350 01 207 001
4	Ground socket PX, high-grade steel 1.4301 / 304	Connection tube PX	350 01 207 011
5	Ground socket M4, hot-dip galvanised steel	Support tube M4	350 01 226 510
Mounting plates			
6	Mounting plate M4 / M8, 30 × 30 × 1.5 cm, hot-dip galvanised steel	Support tube M4	350 01 226 921
7	Mounting plate M4 special, for installation height 50–149 mm, hot-dip galvanised steel	Support tube M4	350 01 226 932
8	Mounting plate M4 special, for installation height 150–350 mm, hot-dip galvanised steel	Support tube M4	350 01 226 930
	Mounting plate M4 for isolated grounds, installation height made to measure, high-grade steel 1.4301 / 304	Support tube M4	350 01 229 730
Wall consoles			
9	Wall console M4, extension 480 mm, hot-dip galvanised steel	Support tube M4	350 01 229 405
10	Wall console M4, extension 100 mm, hot-dip galvanised steel	Support tube M4	350 01 229 410



1



2



3



4



5



6



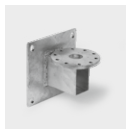
7



8



9



10



11



12



13



14



15



16



17



18



19



20

Fixations		Absolutely necessary	Order no.
Bases			
11	Concrete base Z, 90 kg, Ø 75 × 11 cm, light concrete ^{NEW}	Support tube Z	350 01 111 416
	1 pallet (10 pieces) concrete base Z, 90 kg, Ø 75 × 11 cm, light concrete ^{NEW}	Support tube Z	350 01 112 416
	¹ Concrete base Z, 90 kg, Ø 75 × 11 cm	Support tube Z	350 01 109 523
	¹ 1 pallet (10 pieces) concrete base Z, 90 kg, Ø 75 × 11 cm	Support tube Z	350 01 109 535
12	Natural granite base Z, 90 kg, 64 × 64 × 9 cm, natural stone	Support tube Z	350 01 109 515
13	Base frame M4, 120 kg, (for 8 plates 40 × 40 × 4 cm), 91 × 91 × 11.5–15.5 cm, hot-dip galvanised steel, adjustable and levellable (price without plates)	Support tube M4	350 01 108 235
	Slab set, 8 pieces, 40 × 40 × 4 cm, (approx. 110 kg), concrete		350 01 226 908
	Slab set, 8 pieces, 40 × 40 × 4 cm, (approx. 115 kg), 4 pieces concrete, 4 pieces in granite-look		350 01 226 909
14	Cover for M4 base 120 kg, 96 × 96 × 11.5 cm, plastic ABS coated, anodised aluminium look		350 01 100 617
15	Cover for M4 base 120 kg, 96 × 96 × 11.5 cm, plastic ABS coated, anthracite		350 01 100 630
	^{3,6} Set of castors for base M4 120 kg / 180 kg, (maximum weight 240 kg), Ø 5 cm, H = 5.5 cm, galvanised steel		350 01 100 500
Bases with castors			
16	³ Base with castors Z, 90 kg, 80 × 80 × 11 cm, light concrete (without decorative plate)	Support tube Z + Decorative plate	350 01 113 400
	³ 1 pallet (5 pieces) base with castors Z, 90 kg, 80 × 80 × 11 cm, light concrete (without decorative plate)	Support tube Z + Decorative plate	350 01 113 480
	Decorative plate in grey white RAL 9002 for base with castors Z, 90 kg, aluminium composite		350 01 113 510
	Decorative plate in anthracite RAL 7016 for base with castors Z, 90 kg, aluminium composite		350 01 113 520
17	³ Base frame with castors M4, 120 kg, 80 × 80 × 14.6 cm, hot-dip galvanised steel, white RAL 9016, frame approx. 30 kg (without decorative plate)	Weight Set + Support tube M4 + Decorative plate	350 01 113 610
18	³ Base frame with castors M4, 120 kg, 80 × 80 × 14.6 cm, hot-dip galvanised steel, anthracite RAL 7016, frame approx. 30 kg (without decorative plate)	Weight Set + Support tube M4 + Decorative plate	350 01 113 620
	Weight Set for base with castors M4, 120 kg, 4 pieces, concrete, (Weight Set approx. 90 kg)		350 01 110 500
	Decorative plate in grey white RAL 9002 for base with castors M4, 120 kg, aluminium composite		350 01 113 710
	Decorative plate in anthracite RAL 7016 for base with castors M4, 120 kg, aluminium composite		350 01 113 720
19	³ Natural granite base M4, 120 kg, 90 × 90 × 17 cm, natural stone, with castors	Support tube M4	350 01 109 475
	^{1,3} Base frame with castors M4, 150 kg, 80 × 80 × 14 cm, hot-dip galvanised steel	Weight Set + Support tube M4	350 01 103 000
	¹ Cast concrete decor weights set, 4 pieces 25101104500 (approx. 125 kg) for 350 01 103 000		350 01 103 100
Support tubes/Connection tubes			
20	Support tube Z, P*, hot-dip galvanised steel		350 01 201 400
20	Support tube Z, P*, high-grade steel 1.4301 / 304		350 01 201 500
21	Support tube M4, P*, hot-dip galvanised steel		350 01 200 235
22	Connection tube PX, P*, hot-dip galvanised steel, anodised natural		350 01 206 050
	Connection tube PX, P*, hot-dip galvanised steel, anthracite (for anthracite frame)		350 01 206 040
22	Connection tube PX, P*, high-grade steel 1.4301 / 304, anodised natural		350 01 206 020
	Connection tube PX, P*, high-grade steel 1.4301 / 304, anthracite (for anthracite frame)		350 01 206 030

¹ while stocks last

³ only suitable for smooth, joint free surface coverings

⁶ Not suitable for cover for M4 base



21



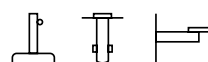
22



Frame	<p>10 parts</p> <p>Profiled mast Ø 67 mm</p> <p>Crank drive for opening and closing</p> <p>Crank insertable for right- and left-handers</p> <p>With a gas compression spring, the parasol can be easily adjusted to the desired height (50 cm hub)</p> <p>Support arm can be steplessly extended in the roller guide</p> <p>Glatz ball and socket joint (made from pressed, hard-anodised aluminium)</p> <p>allows parasol roof to be steplessly tilted in all directions by 90°</p> <p>Stepless 360° rotation</p> <p>Shell parts made from fibreglass-reinforced plastic, guides made from Teflon-modified, high-performance plastic</p> <p>Ribs made from tempered spring steel, galvanised and powder-coated</p> <p>Frame roof: round, rectangular</p>
Frame colour	Natural anodised or anthracite powder-coated aluminium
Canopy	Fabric Quality 5: polyacrylic, 300 g/m², UV protection > 98 %
Flounce	Available with or without
Protective cover	Included in delivery
Electrical accessories	Osyrion Spot LED with integrated battery pack



Using Locations



Fixations



PENDALEX® P⁺,
Int. Patents reg. © Int. Design reg.

Valid from 1.1.2024
glatz.com