

AMB

AMBIENTE Nova

The queen of the side-mast parasols



Unique selling proposition

- Unique design language: Harmonises with all giant parasols and F-line
- Continuous mast profile down to the floor covering (internal support tube)
- Patented and synchronous opening mechanism:
 - Operation via crank or motor
 - Simultaneous opening and extension of the parasol roof
 - Opened with just a few turns of the crank
 - High closing height (no need to move the furniture)
- 45 km/h wind stability at size 400 × 300 cm
- Top quality material selection
- Parasol can be rotated by 360° using the turnable adapter M4
- LED lighting system integrated into the struts and mast
- Special product solutions (Sizes, frame, fabrics, ...)

Places of use

- Large area outdoors
- Small area outdoors



AMBIENTE Nova

The queen of the side-mast parasols

Basic model

Frame

- 8 parts made from anodised aluminium
- Profiled straight mast
- Mast profile 85 × 145 mm and 4.5 mm wall thickness
- Roof struts 20 × 33 mm

Frame material

- Aluminium: EN-AW-6063-T66
- Screws and rivets made from stainless steel A4
- Glass-fibre reinforced plastic parts: PA6GF30
- Anodisation:
 - Profile surface finishing
 - High degree of hardness – wear resistance (“scratch-resistant”)
 - Increased corrosion resistance
 - Natural appearance (adaptation to environment)
 - Modern look (luxurious matt)

Frame colour

- Anodised natural matt
- RAL colours powder-coated: aluminium parts for a surcharge (plastic parts only in RAL 7045)

Opening principle (synchronous)

- Patented opening mechanism for high closing height
- Fast and simple operation thanks to synchronous opening and extension of the parasol roof
- Opened with just a few turns of the crank

Drive

- With hand crank (detachable)
- With motor (surcharge)

Canopy

- With or without flounce
- Self-tautening thanks to the flexible strut ends
- 100 % polyacrylic approx. 300 g/m² (spun dyed)
- Replaceable or interchangeable canopies

Wind stability

- Up to 45 km/h (with fixed anchorage)
- Tested in a wind tunnel

Fixations

[More information](#)

- Bases / parasol stands / Covers
- Ground sockets
- Mounting plates without or with installation height made to measure
- Mounting plates for insulation floors
- Mounting plates for insulation floors with high insulation
- Base plates made to measure

Additional options – Standard accessories

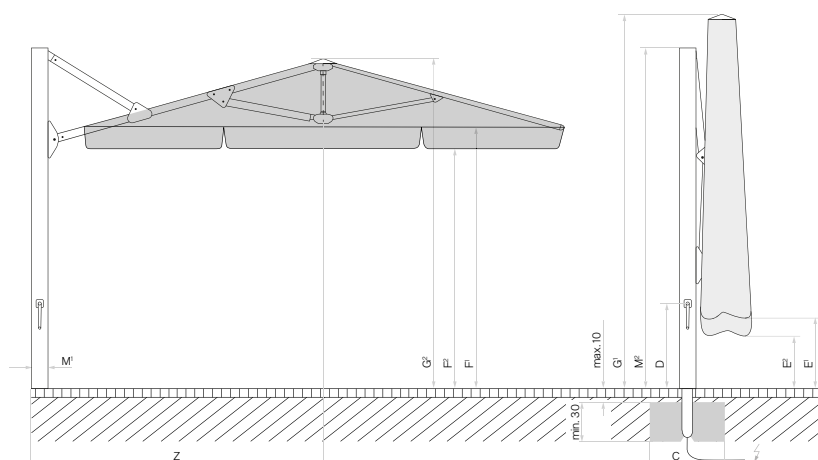
[More information](#)

- Turnable adapter M4 for 360° rotation (with electrical feed lines 310°)
- LED lighting system
- Motorisation
- Protective cover

Special product solutions – Made to measure

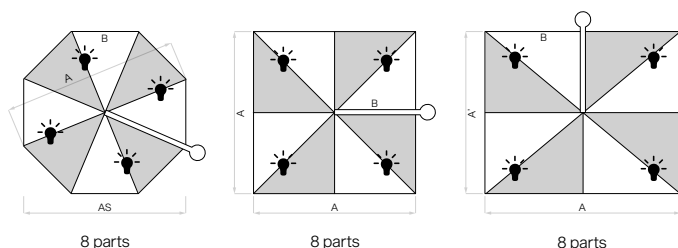
[More information](#)

- Special sizes & intermediate measurements (increment 1)
- Mast extensions & reductions max. + 400 mm / - 300 mm
- Frame in all RAL colours
- Glatz Green® Special fabric
- Special fabrics (third-party fabrics, flame retardant)
- Custom flounces & edging strips
- Printing & advertising print



Loose cover max. 10 cm, concrete thickness min. 30 cm (pay attention to frost depth), guarantee water drainage, supply line electric.

LED positions on the Ambiente Nova with LED



Nominal size	Lateral distance	Pole Ø	Area covered	Crank handle height	Height closed/with flounce	Lowest height when opening + closing/with flounce	Clear height when headroom/ with flounce open	Total height/ height/	Height of pole	Length of free-arm	Foundation	Minimum weight for base	max. wind speed open perm.
cm	cm	cm	m²	cm	cm	cm	cm	cm	cm	cm	cm	kg	km/h (wind force)
A	AS	M¹	B	D	E¹/E²		F¹/F²	G¹/G²	M²	Z	C		
Ø 400	370	8.5 × 14.5	11.3	91	158/134	148/124	225/201	365/295	295	232	80 × 80	240	45 (6)
Ø 500	460	8.5 × 14.5	17.7	91	146/122	136/112	225/201	401/305	295	281	100 × 100	310	35 (6)
350 × 350	-	8.5 × 14.5	12.3	91	92/68	82/58	225/201	343/285	295	213	80 × 80	240	40 (6)
400 × 400	-	8.5 × 14.5	16	91	80/56	70/46	225/201	367/290	295	232	100 × 100	310	35 (6)
400 × 300	-	8.5 × 14.5	12	91	80/56	70/46	225/201	334/270	295	184	80 × 80	240	45 (6)
450 × 350	-	8.5 × 14.5	15.8	91	80/56	70/46	225/201	368/285	295	232	100 × 100	310	35 (6)

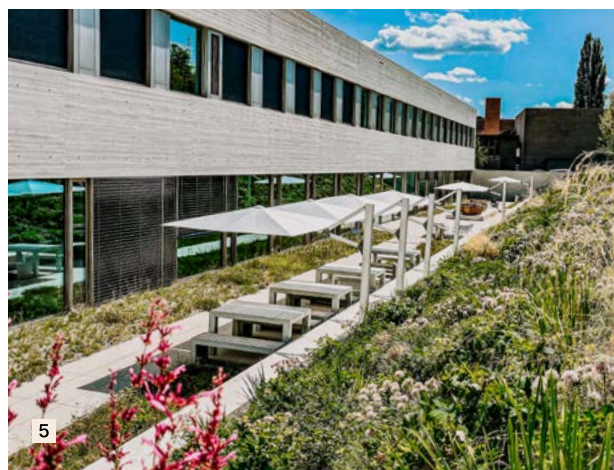
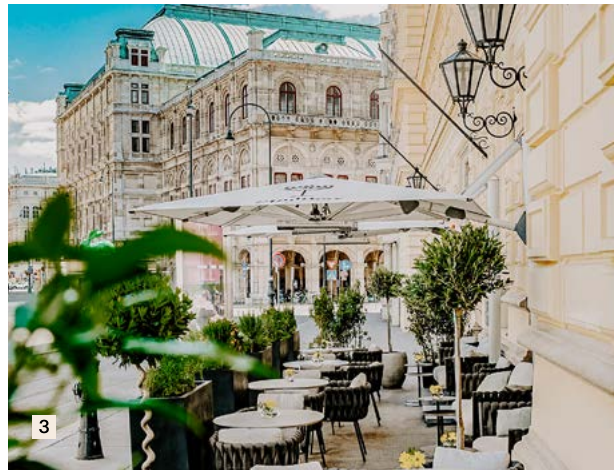
The listed measures represent extrapolated average values that may be slightly different on the product ($\pm 2\% \pm 5$ cm).

If a minimum or a maximum height underneath is required, this must be agreed with Glatz.

The measures of the height are determined by the M4 ground socket. If one of the offered bases is used, these measures change only slightly.

The max. wind speed limits as per our separate sheet apply only if the parasol canopy is in a horizontal position and if there is a fix ground anchorage. A base with the specified minimum weight is not sufficient.

In the presence of several parasols, the min. distance between one parasol and another and between parasols and walls shall be 25 cm.



Glatz AG

+41 52 723 66 44
 contract@glatz.com
 glatz.com

